

## **After Action Review: 4631 N Josephine St**



Charles Broshous © 2016

**Date: 3/31/16      Time: 21:03:33      Incident Number:      16-0033472**

**Address: 4631 N Josephine St, Denver CO 80216**

**Summary-** Numerous calls were placed to Dispatch reporting a fire at an auto body repair shop on the corner of Josephine and Steavenson Place. Callers also reported that there were 2 people that stayed at the business during the night, callers were not sure if those parties were inside the shop or had evacuated. Tower 9 on arrival reported heavy fire in the rear of a 1 story auto body repair shop with fire also inside the structure. Heavy smoke conditions inside structure. In offensive mode, forcible entry was made through the locked exterior gates and then through entry doors and roll up doors, all interior fire was extinguished, a fully involved car on the Charlie side was extinguished, the building was searched with one occupant being removed. Occupant was unconscious and immediate care was initiated by DHMC outside the building. Building was vented using horizontal ventilation, arson investigated the scene, and overhaul was completed after their investigation.

# **After Action Review: 4631 N Josephine St**

## **Risk vs Benefit:**

Concrete building, unknown roof structure but roof not involved in fire, possible occupants= offensive strategy chosen

## **Units Initially Dispatched:**

E09,E10,E03,TR09,T04,TR15 RIT, Rescue 1, HAMER 1, Chief 4, Chief 2, Ops 2

## **First Arriving Unit(s):**

E09 and TR09

## **Additional Units Requested:**

E07 added by Dispatch due to numerous 911 calls

## **Initial Assignments:**

IC: Chief 4                      RIT: Tower 15                      Safety Officer: Ops 2

Chief 2: Charlie Division

Engine 9: 2 ½" line Alpha side                      Tower 9: Forcible entry, Search, Horizontal Vent

Engine 3: 2 ½" line Alpha side                      Truck 4: Search, Horizontal Vent                      R01: Search

Engine 10: In C Division, 2 ½" line                      HM01: In C Division

Engine 07: In C Division, 1 ¾" line

## **Initial Strategy:**

Offensive

## **Initial Supply Line:**

3" # of Lines 2                      Supply Engine: E03                      Humat: Yes

## **Attack Line(s):**

Three 2 ½" lines, One 1 ¾"

## **Back-up Line:**

N/A

## **Was the building laddered:**

Yes, Aerial

2 Means of egress: No

# **After Action Review: 4631 N Josephine St**

## **Building Size:**

3500 sq ft

## **Type:**

Commercial, Cinder block

## **Occupancy:**

Auto Body Repair

## **Stories:**

1

## **Involvement Upon Arrival:**

Heavy fire Charlie side exterior, extension into bldg.

## **Initial Location of Fire:**

Charlie side

## **Communications:**

TAC 4 and Face to Face. Radio channel functioned well, several transmissions unreadable due to many other radios in close range.

## **Special Challenges:**

Business was closed and secured for the night. Companies had to cut through locks on gates on Alpha and Charlie sides, then force entry into secured building and metal roll up doors. Also, information about amount of possible occupants changed throughout fire.

## **Hazards:**

Numerous automobiles around and in structure, many fully involved. High amount of storage of auto parts, supplies, fluids, etc.

## **Safety Issues:**

Typical hazards for auto body repair shop-automobiles, heavy storage of auto parts, supplies, fluids, etc.

## **Command Structure:**

IC: Chief 4

# **After Action Review: 4631 N Josephine St**

**Safety Officer:** Ops 2

**RIT:** Tower 15

**Other assignments:**

Charlie Division- Chief 2, Division Supervisor. E10, E07, HM01

E09, E03, TR09, T04, R01 working as Single Resources

*Command Structure Notes: Span of Control 1:7 for IC, 1:3 for Charlie Division. Command structure worked well for this incident.*

## **Evaluation and Summary**

1. What was our goal?
2. What went well?
3. What could have gone better?
4. Recommendations
5. Safety considerations

### **Goal:**

Search and Rescue of 2 possible occupants, extinguishment of fire.

### **What went well:**

Immediately after initial dispatch, the dispatchers realized from the amount of calls and information coming in that this was a confirmed structure fire; because of this they added another Engine to the response. Initial IC (Tower 9) and subsequent IC (Chief 4) established an effective offensive strategy and communicated well. 4 attack lines on fire resulted in rapid extinguishment. Three companies searching various parts of the building resulted in a quick rescue of 1 party, ALS (already on scene) made it to the patient quickly to start medical care. Forcible entry through fence and through roll up doors (for ventilation) was a challenge but occurred quickly. E03, E10, and Chief 2 were delayed for approximately 1 minute by 2 trains but

## **After Action Review: 4631 N Josephine St**

due to radio communications from Command at the incident, were able to place their rigs and deploy quickly.

### **Evaluation and Summary (cont'd)**

#### **What could have gone better:**

Once all companies were assigned, additional companies were not requested to have in staging in case needed.

Wording used on the radio to describe the party that was removed from the structure gave the impression that we had a fatality.

#### **Recommendations:**

At a working incident, if all companies are assigned and incident is not under control, request additional resources from Dispatch to have companies in staging, in case needed.

Be aware of the wording used for patients at an emergency scene. "Patient" or "Party" instead of "Casualty" or "Victim".

#### **Safety considerations:**

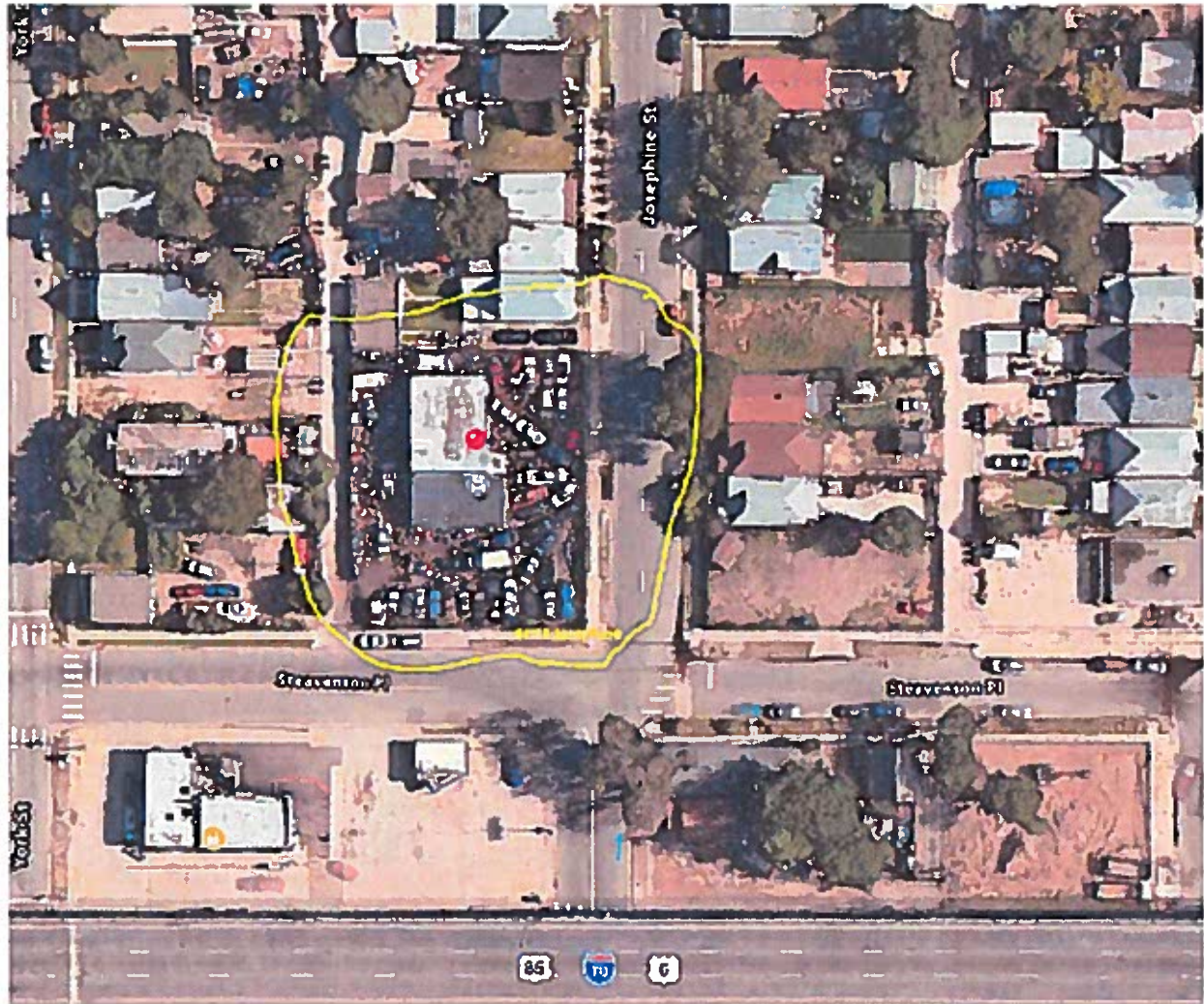
Typical hazards for this type of occupancy, no additional safety considerations were encountered.

#### **Summary:**

DFD responded to a commercial building (locked and secured for the night) with a substantial amount of fire both inside and outside of the structure. DFD rapidly extinguished the fire. Reports of 2 occupants inside the structure turned out to be only one occupant who was quickly removed and cared for by DHMC. This re-emphasizes our practice of assuming that every structure is occupied until proven otherwise. This incident had several challenges (several apparatus delayed by trains, secured and locked building, heavy storage of vehicles and parts inside and outside) but all companies worked quickly to overcome them.



## After Action Review: 4631 N Josephine St



## After Action Review: 4631 N Josephine St

